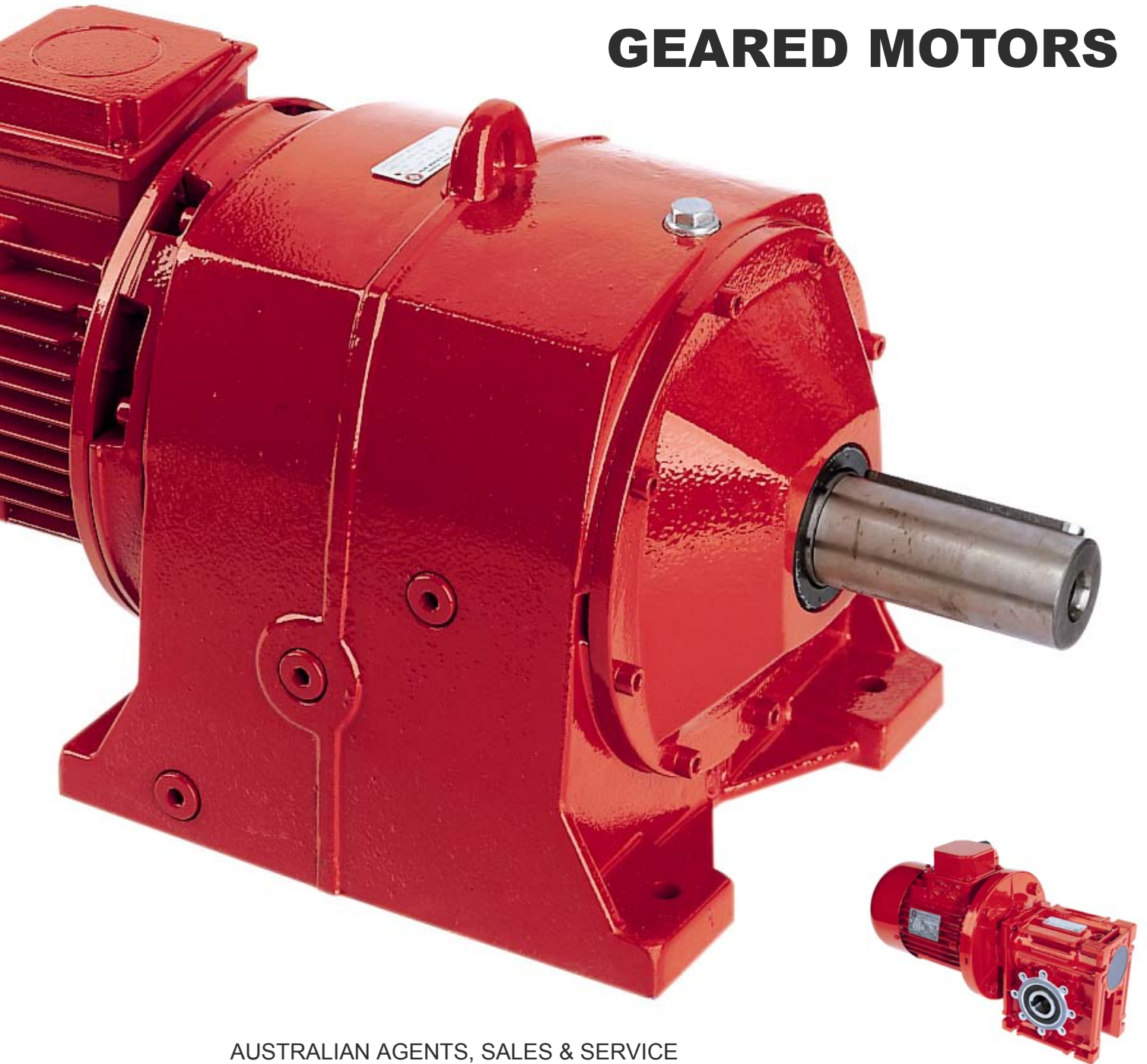




PUJOL MUNTALA

**GEARED UNITS AND
GEARED MOTORS**



AUSTRALIAN AGENTS, SALES & SERVICE

ROYCE CROSS AGENCIES

**3 CORD STREET
DUDLEY PARK SA 5008**

EMAIL

sales@roycecross.com.au

**TELEPHONE
(08) 8269 4000**

**FACSIMILE
(08) 8269 6699**



PUJOL MUNTALA

INDEX



Series IPC pages 4 & 6



Series SPC pages 5 & 7



Series LAC pages 8 , 9, 10 & 11



Series LPC pages 12



Series LXC pages 12 ,13 & 14



WHY USE A PUJOL GEARED REDUCER?

Fitment to Standard Motors

Standard Flanges to IEC Motors

Smooth, Quieter Operation

Highly Competitive

Huge Ratio Range

High Torque Capacity

Compact Designs

**Heavy Duty Cast Iron Construction
Series IPC, SPC, LPC & LXC**

**Available in Stock
from Adelaide & Melbourne**

Reliability

Fully Reversible

Service & Support

PUJOL IPC INLINE HELICAL GEARED MOTORS



SERIES "I" COAXIAL, WITH HELICAL GEARS

IPC 102 (19 mm)

KW						.37KW	
Gearbox	Ratio	Flange	RPM			sf	Code
	10.5	71	133			2.62	IPC102/10.5/160-14
	17	71	82			1.78	IPC102/17/160-14
	24.6	71	57			1.49	IPC102/24.6/160-14
	29.1	71	48			1.31	IPC102/29.1/160-14
	47	71	30			1.01	IPC102/47/160-14

IPC 128 (24 mm)

KW				0.25kw	0.37KW	.55KW	.75KW	
Gearbox	Ratio	Flange	RPM	sf	sf	sf	sf	Code
	51.6	71	27	2.4	1.6			IPC128/51/160-14
	71.4	71	21	1.6	1.1			IPC128/71/160-14
	100.1	71	14	1	0.68			IPC128/100/160-14
	11.5	80	122			3.09	2.27	IPC128/11.5/200-19
	13.8	80	102			2.00	1.47	IPC128/13.8/200-19
	18.2	80	77			2.00	1.47	IPC128/18.2/200-19
	22.6	80	62			1.81	1.33	IPC128/22.6/200-19
	27.6	80	51			1.63	1.20	IPC128/27.6/200-19
	34.3	80	41			1.27	1.00	IPC128/34.3/200-19

KW				.55KW	.75KW	1.1KW	1.5KW	
Gearbox	Ratio	Flange	RPM	sf	sf	sf	sf	Code
	2.7	90	519	6.7	4.9	4.3	3.10	IPC128/2.7/200-24
	3.7	90	376	6.7	4.9	3.5	2.50	IPC128/3.7/200-24
	4.6	90	302	5.8	4.3	2.9	2.10	IPC128/4.6/200-24
	5.5	90	255	4.90	3.60	2.45	1.80	IPC128/5.5/200-24
	6.8	90	206	4.00	2.93	2.00	1.46	IPC128/6.8/200-24
	9.4	90	149	3.45	2.50	1.72	1.26	IPC128/9.4/200-24
	11.5	90	122	3.09	2.26	1.54	1.13	IPC128/11.5/200-24
	13.7	90	102	2.00	1.47	1.45	1.06	IPC128/13.7/200-24
	18.1	90	77	1.81	1.47	1.36	1.00	IPC128/18.1/200-24

IPC142 (28 mm)

KW				.55KW	.75KW	1.1KW	1.5KW	
Gearbox	Ratio	Flange	RPM	sf	sf	sf	sf	Code
	45.2	80	31	1.67	1.22			IPC142/45.2/200-19
	11.8	90	119	4.54	3.33	2.27	1.67	IPC142/11.8/200-24
	15.2	90	92	3.63	2.66	1.82	1.33	IPC142/15.2/200-24
	18.5	90	76	2.90	2.13	1.45	1.07	IPC142/18.5/200-24
	23.8	90	59	2.90	2.13	1.45	1.07	IPC142/23.8/200-24
	28.2	90	50	2.72	2.00	1.36	1.01	IPC142/28.2/200-24
	36.3	90	39	2.00	1.46	1.00	0.73	IPC142/36.3/200-24

				2.2KW	3KW	4KW	
	2.8	100	500	3.3	2.4	1.8	IPC142/2.8/250-28
	3.6	100	389	2.7	2	1.5	IPC142/3.6/250-28
	4.7	100	298	2.2	1.6	1.2	IPC142/4.7/250-28
	5.6	100	250	2	1.4	1.1	IPC142/5.6/250-28
	7.2	100	194	1.5	1.1	0.83	IPC142/7.2/250-28
	10	100	140	1.4	1	0.75	IPC142/10/250-28
	11.8	100	119	1.1	0.83	0.83	IPC142/11.8/250-28
	15.2	100	92	1	0.73	0.73	IPC142/15.2/250-28

PUJOL IPC & SPC INLINE HELICAL GEARED MOTORS



SERIES "S" COAXIAL, HELICAL GEARS

IPC 162 (38 mm)

KW				.55KW	.75KW	1.1KW	1.5KW	
Gearbox	Ratio	Flange	RPM	sf	sf	sf	sf	
	25.9	90	54	4.72	3.46	2.36	1.73	IPC162/25.9/200-24
	32.2	90	43	4.18	3.06	2.09	1.73	IPC162/32.2/200-24
	45.6	90	31	3.09	2.26	1.54	1.13	IPC162/45.6/200-24

KW					2.2KW	3KW	4KW	
Gearbox	Ratio	Flange	RPM		sf	sf	sf	Code
	6.4	112	219		3.18	2.33	1.75	IPC162/6.4/250-28
	9.4	112	149		2.45	1.80	1.38	IPC162/9.4/250-28
	10.7	112	131		2.23	1.63	1.23	IPC162/10.7/250-28
	13.4	112	104		1.86	1.36	1.03	IPC162/13.4/250-28
	18.9	100	74		1.41	1.03		IPC162/18.9/250-28
	22.7	100	62		1.18			IPC162/22.7/250-28
	25.9	100	54		1.18			IPC162/25.9/250-28
	32.2	100	43		1.04			IPC162/32.2/250-28

KW						5.5KW	7.5KW	
Gearbox	Ratio	Flange	RPM			sf	sf	
	6.4	132	219			1.27	1.00	IPC162/6.4/300-38

SPC 160 (48 mm)

KW				2.2KW	3KW	4KW		
Gearbox	Ratio	Flange	RPM	sf	sf	sf		Code
	10.5	112	133	4.54	3.33	2.50		SPC160/10.5/250-28
	14.8	112	96	3.64	2.66	2.01		SPC160/14.8/250-28
	19.2	112	73	3.18	2.33	1.75		SPC160/19.2/250-28
	27	112	52	2.27	1.66	1.25		SPC160/27/250-28
	37	112	38	1.82	1.33	1.01		SPC160/37/250-28
	48.1	100	30	1.05				SPC160/48.1/250-28

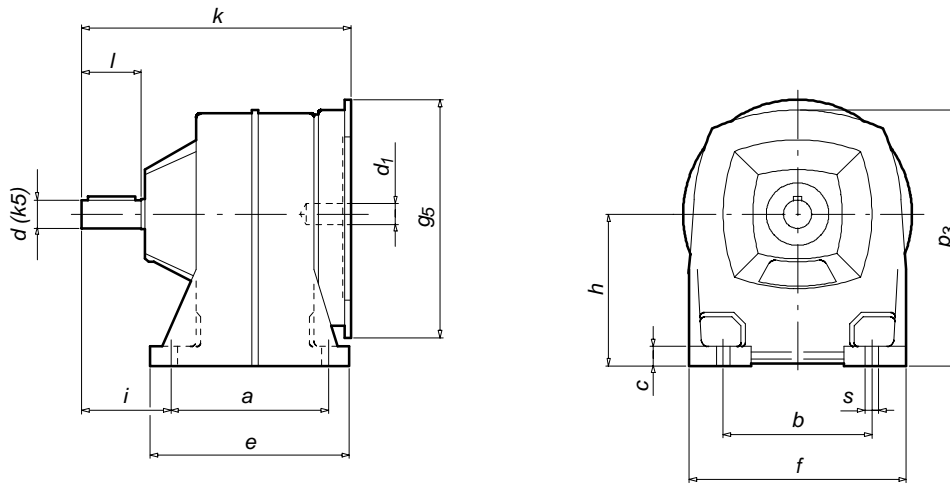
KW					5.5KW	7.5KW		
Gearbox	Ratio	Flange	RPM		sf	sf		Code
	14.8	132	96		1.45	1.07		SPC160/14.8/300-38

SPC 180 (50 mm)

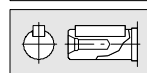
KW					5.5KW	7.5KW		
Gearbox	Ratio	Flange	RPM		sf	sf		Code
	25.5	132	56		1.36	1.00		SPC180/25.5/300-38



“IPC”
DIMENSIONS (mm)



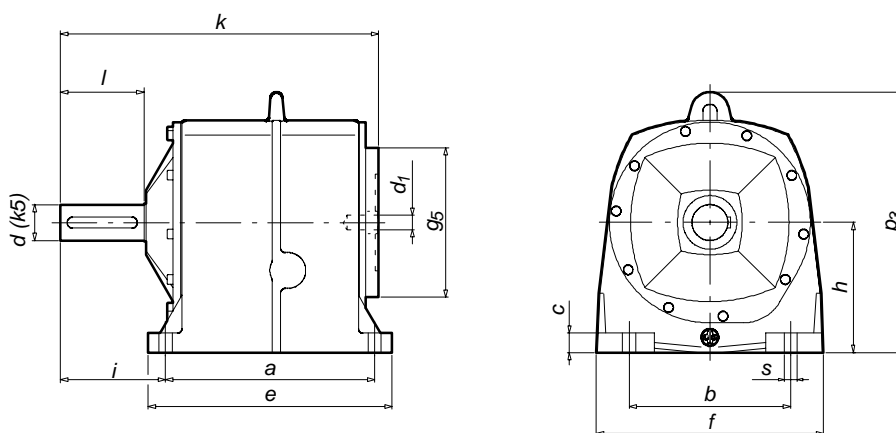
Typo Type Type	Peso Gew. Weight Poids [Kg]	d_1	g_5	k	a	b	c	e	f	h	i	p_3	s	d	l
84	4.5	9	120	149											
	5	11	140	157	88	78	11	108	120	84	48	143	10	16	34
	5.5	14	160	190											
102	8	11	140	181											
	8.5	14	160	181	106	100	13	134	150	102	60	176	9	19	40
	9.5	19	200	225											
	9.5	24	200	225											
128	12.5	11	140	206											
	13	14	160	207											
	15	19	200	225	126	118	16	160	178	128	74	215	11	24	50
	16	24	200	242											
	17	28	250	266											
142	20	19	200	253											
	21	24	200	270	145	130	18	179	196	142	95	237	11	28	60
	23	28	250	312											
162	33	19	200	338											
	33	24	200	338											
	34	28	250	341	205	160	21	245	226	162	120	269	14	38	80
	37	38	300	411											



Approximate weights are shown in the tables.
We reserve the rights to modify any dimensions, without changing the Type number of reducers.
CD for CAD systems are also available, providing to scale, drawings of reducers and accessoires.



“SPC”
DIMENSIONS (mm)

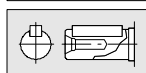


Typo Type Type	Peso Gew. Weight Poids [Kg]	d ₁	g ₅	k	a	b	c	e	f	h	i	p ₃	s	d	l
160	48	14	160	391											
	48	19-24	200	403											
	48.8	28	250	409	270	195	24	310	276	160	137	319	13	48	110
	50	38	300	435											
	52	42	350	463											
180	62	14	160	419											
	65	19-24	200	433											
	65	28	250	431	295	220	27	340	310	180	139	357	18	50	110
	70	38	300	454											
	82	42-48	350	489											
195	83	14	160	441											
	85	19-24	200	457											
	85	28	250 (1)	445											
	85	28	250 (2)	472	320	240	30	365	347	195	138	394	18	55	110
	87	38	300	473											
	85	42-48	350	508											
	55	400													
218	115	19-24	200	513											
	115	28	250	528											
	120	38	300	528											
	120	42-48	350	564	350	270	33	408	380	218	174	436	22	60	140
		55	400												
	60	450													
238	175	19-24	200	544											
	180	28	250	552											
	180	38	300	550											
	180	42-48	350	584	390	300	36	452	418	238	175	475	22	70	140
	180	55	400	582											
	188	60	450	613											
	65	550													

Approximate weights are shown in the tables.
We reserve the rights to modify any dimensions, without changing the Type number of reducers.
CD for CAD systems are also available, providing to scale, drawings of reducers and accessoires.

(1) Nominal output speed 30 to 300 1/min

(2) Nominal output speed 3 to 25 1/min



LAC RIGHT ANGLE ALUMINIUM GEARED MOTORS



LAC 40 18 mm

KW						0.18KW	0.37KW	
Gearbox	Ratio	Flange	RPM			sf	sf	Code
	5	63	273			5.4		LAC40/5/140-11
	10	63	137			3.9		LAC40/10/140-11
	15	63	91			3.2		LAC40/15/140-11
	19	63	72			2.6		LAC40/19/140-11
	29	63	47			2.2		LAC40/29/140-11
	40	63	34			1.6		LAC40/40/140-11
	50	63	27			1.2		LAC40/50/140-11
	65	63	21			0.89		LAC40/65/140-11

	5	71	270				2.6	LAC40/5/160-14
	10	71	135				1.9	LAC40/10/160-14
	15	71	90				1.5	LAC40/15/160-14
	19	71	71				1.2	LAC40/19/160-14
	29	71	47				1.1	LAC40/29/160-14

LAC 49 25 mm

KW						0.18KW	0.37KW	
Gearbox	Ratio	Flange	RPM			sf	sf	Code
	50	63	27			2		LAC49/50/140-11
	65	63	21			1.33		LAC49/65/140-11
	80	63	17			1.06		LAC49/80/140-11
	100	63	14			0.66		LAC49/100/140-11

	10	71	137				3.2	LAC49/10/160.14
	15	71	91				2.5	LAC49/15/160.14
	19	71	72				1.9	LAC49/19/160.14
	29	71	47				1.7	LAC49/29/160.14
	40	71	34				1.2	LAC49/40/160.14
	50	71	27				1	LAC49/50/160.14

LAC 61 30 mm (25mm)

KW				0.25KW	0.37KW	0.55/0.75KW	1.1/1.5KW	
Gearbox	Ratio	Flange	RPM	sf	sf	sf	sf	Code
	100	71	14	0.89				LAC61/100/160-14

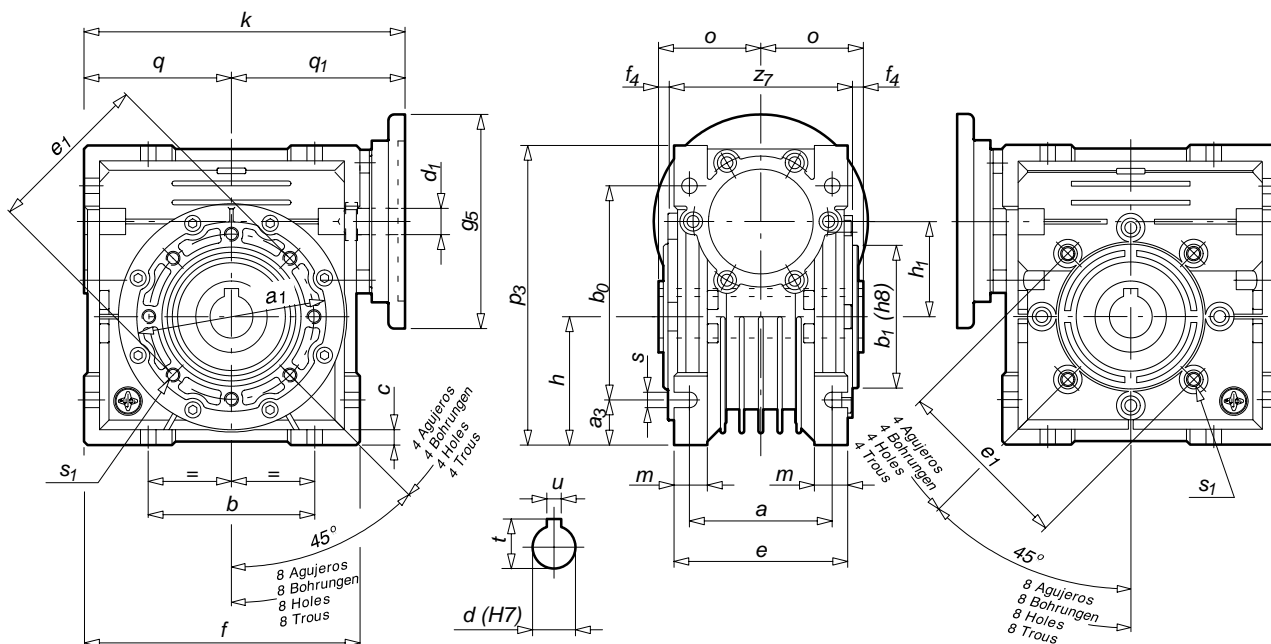
	50	71	28		1.57			LAC61/50/160-14
	65	71	21		1.21			LAC61/65/160-14
	80	71	17		0.85			LAC61/80/160-14

	5	80	280			3.46		LAC61/5/200-19
	10	80	140			2.8		LAC61/10/200-19
	15	80	93			2.26		LAC61/15/200-19
	20	80	70			1.6		LAC61/19/200-19
	29	80	48			1.3		LAC61/29/200-19
	40	80	35			1.03		LAC61/40/200-19
	50	80	28			1.05 (0.55)		LAC61/50/200-19

	5	90	280				1.73	LAC61/5/200-24
	10	90	140				1.4	LAC61/10/200-24
	15	90	93				1.14	LAC61/15/200-24
	20	90	70				1.1 (1.1)	LAC61/19/200-24

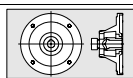


"LAC" DIMENSIONS (mm)



Tipo 40 Typ 40 Type 40 Type 40		Tipo 49 Typ 49 Type 49 Type 49		Tipo 61 Typ 61 Type 61 Type 61	
d_1	g_5	d_1	g_5	d_1	g_5
9	90	9	105	11	120
9	105	9	120	11	140
9	120	9	140	11	160
9	140	9	160	11	200
9	160	11	120	14	140
11	90	11	105	14	120
11	105	11	140	14	160
11	120	11	160	14	200
11	140	14	105	19	120
11	160	14	120	19	140
14	90	14	140	19	160
14	105	14	160	19	200
14	120	19	105	24	120
14	140	19	120	24	140
14	160	19	140	24	160
		19	160	24	200

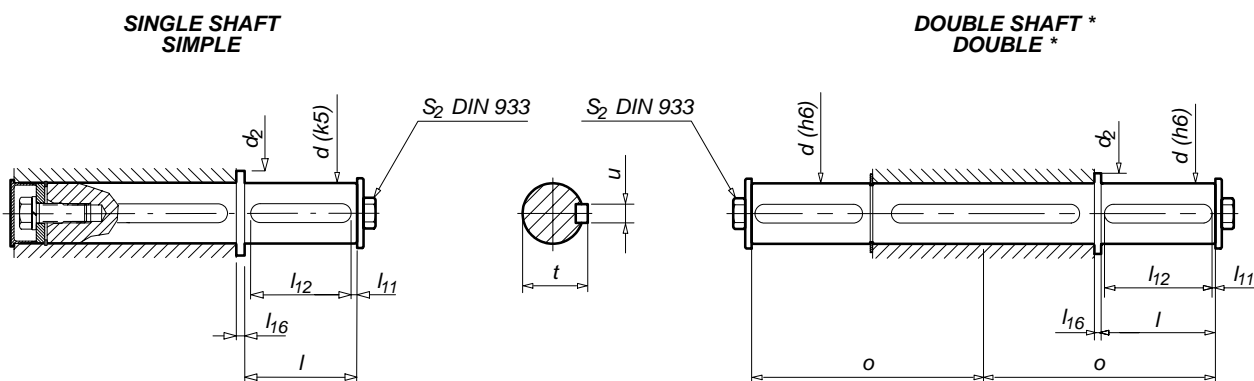
Tipo Type Type Type	Peso Gew. Weight Poids [Kg]	k	a	a_1	a_3	b	b_0	b_1	c	e	e_1	f	f_4	h	h_1	m	o	p_3	q	q_1	s	s_1	Nº agujeros Anzahl Bohrungen Nº holes Nbre.trous	z_7	d	t	u
40	2.4	135	60	85	19	70	90	60	6.5	73	75	116	3.5	54	40	14	42	126	62	73	6.5	M6x14	4	77	18 (19)	20.8	6
49	3.4	160	66	100	20	80	104	70	7	79	85	132	2.5	60	49	17.5	43	146	72	88	8.5	M8x12	4	81	25 (24)	28.3 (27.3)	8
61	7	185	85	109	22	100	130	80	8	103	95	157	3	72	61	21	55	180	85	100	9	M8x12	8	104	30 (25)	33.3 (28.3)	8



() Under requirement
Approximate weights are shown in the tables.
We reserve the rights to modify any dimensions, without changing the Type number of reducers.
CD for CAD systems are also available, providing to scale, drawings of reducers and accessoires.



OUTPUT SHAFT SUPPLEMENTS

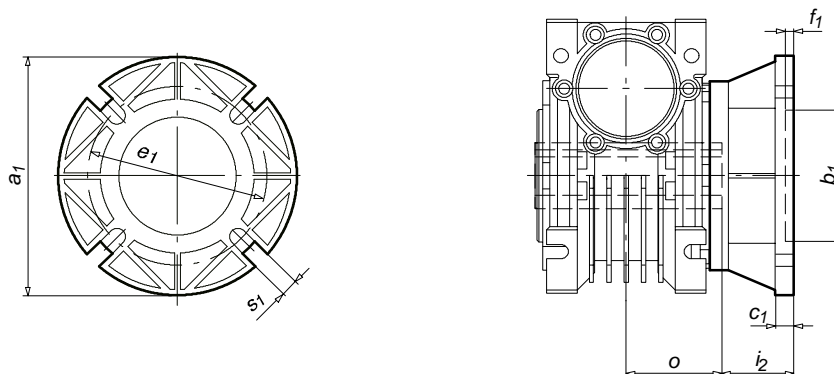


* Unable to support high axial loads (to consult)

Tipo Typ Type	Código Referenz Ref. Réf.	d_2	l_{11}	l_{12}	l_{16}	o	s_2	d	l	t	u
L 40	simple einseitig single simple 3049020000	25	4	32	3	85	M6 x 16	18	40	20.5	6
	doble beidseitig double double 3049020050										
L 49	simple einseitig single simple 3049030000	30	5	40	3	96	M10 x 20	25	50	28	8
	doble beidseitig double double 3049030050										
L 61	simple einseitig single simple 3049040000	35	5	50	4	119	M10 x 20	30	60	33	8
	doble beidseitig double double 3049040050										
LX 87	simple einseitig single simple 3049050220	40	5	60	4	149	M12 x 30	35	70	38	10
	doble beidseitig double double 3049050230										
LX 110	simple einseitig single simple 3049060220	45	5	70	4	174	M16 x 40	40	80	43	12
	doble beidseitig double double 3049060230										
LX 130	simple einseitig single simple 3049070220	50	2.5	80	5	194	M16 x 40	45	85	48.5	14
	doble beidseitig double double 3049070230										

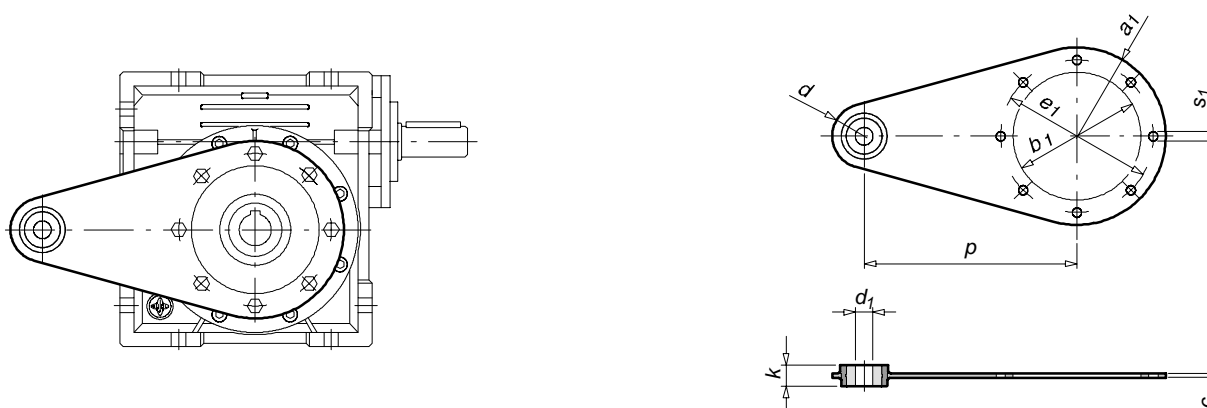


**OUTPUT FLANGE
SUPPLEMENTS
SERIE "LA"
DIMENSIONS (mm)**



Tipo Typ Type	Código Referenz Ref. Réf.	a ₁	b ₁	c ₁	e ₁	f ₁	i ₂	o	s ₁
LA 40	3049020210	118	60 (H8)	8.5	85 (min.) - 100 (max.)	4	35	42	8.5
	3049020220	160	95 (H8)	8.5	114 (min.) - 132 (max.)	5	38	42	9.5
LA 49	3049030210	118	70 (H8)	11.5	85 (min.) - 100 (max.)	5	39	43	8.5
	3049030220	160	110 (H8)	12	114 (min.) - 132 (max.)	5	46	43	9.5
LA 61	3049040210	180	115 (H8)	10	150 (min.) - 160 (max.)	4	47.5	55	10.5

**TORQUE ARM
DIMENSIONS (mm)**



Tipo Typ Type	Código Referenz Ref. Réf.	a ₁	b ₁	c	d	d ₁	e ₁	k	p	s ₁
LA 40	3049020110	44	61	4	25	12	75	18	100	7
LA 49	3049030100	50	71	4	25	12	85	18	125	9
LA 61	3049040110	55	81	5	25	12	95	18	150	9

PUJOL LPC RIGHT ANGLE CAST GEARED MOTORS



LPC 49 25 mm

KW				0.37KW			
Gearbox	Ratio	Flange	RPM			sf	Code
	10	71	137			3.24	LPC49/10/160-14
	15	71	91			2.27	LPC49/15/160-14
	19	71	72			1.95	LPC49/19/160-14
	40	71	34			1.24	LPC49/40/160-14

LPC 61 30 mm

KW				0.55/0.75KW			
Gearbox	Ratio	Flange	RPM			sf	Code
	5	80	280			3.61	
	15	80	93			2.27	LPC61/10/200-19
	19	80	70			1.61	LPC61/15/200-19
	40	80	35			1.03	LPC61/40/200-19

LPC 87 35 mm

KW				1.1/1.5KW			
Gearbox	Ratio	Flange	RPM			sf	Code
	15	90	93			2.41	LPC87/15/200-24
	20	90	70			2.07	LPC87/20/200-24
	40	90	35			1.27	LPC87/40/200-24

PUJOL LXC RIGHT ANGLE CAST GEARED MOTORS



LXC 87 35 mm

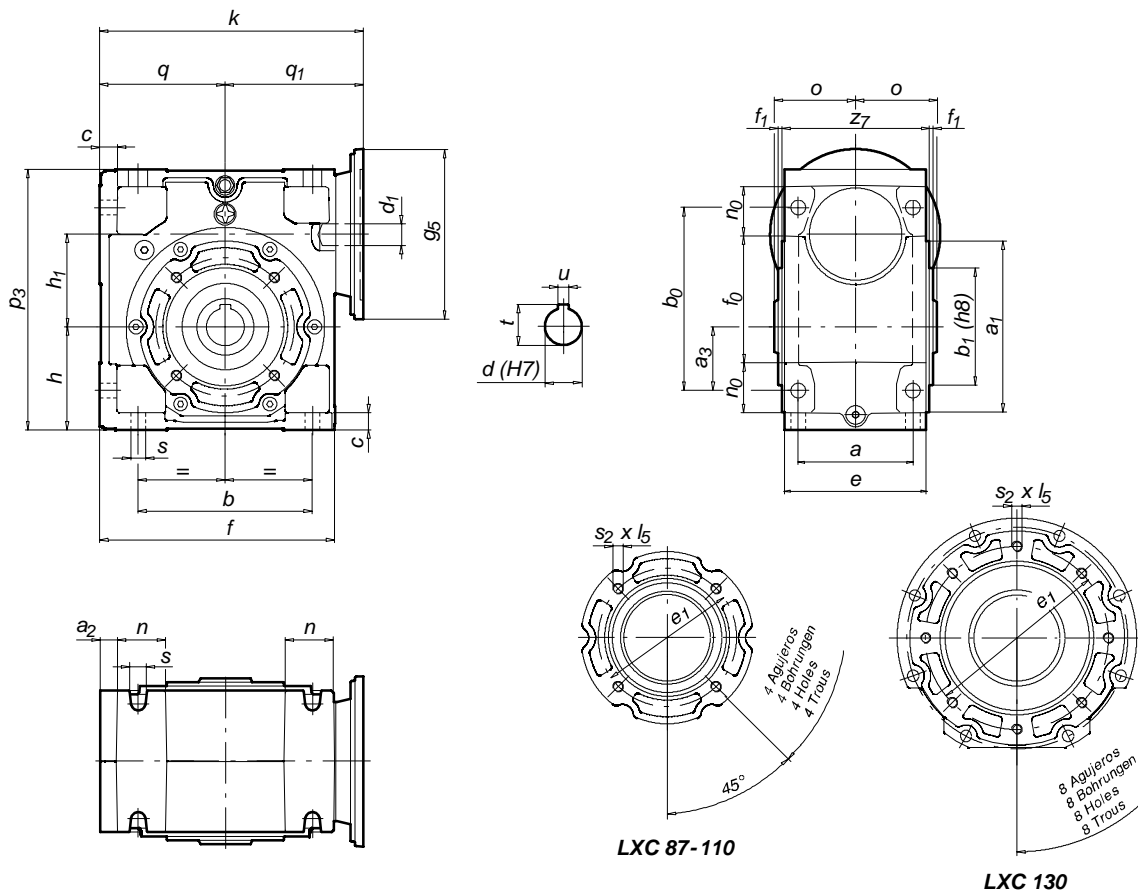
KW		Flange	RPM	0.55/0.75KW	1.1/1.5KW	3KW	4KW	Code
Gearbox	Ratio			sf	sf	sf	sf	
	80	80	18	0.69				LXC87/80/200-19
	100	80	14	1				LXC87/100/200-19
	20	90	70		2			LXC87/20/200-24
	29	90	48		1.5			LXC87/29/200-24
	40	90	35		1.3			LXC87/40/200-24
	50	90	28		0.98			LXC87/40/200-24
	65	90	22		0.69			LXC87/65/200-24
	5	100	284			2.1	1.6	LXC87/5/250-28
	7.5	100	199			1.6	1.38	LXC87/5/250-28
	10	100	142			1.2	1.2	LXC87/10/250-28
	15	100	95			1	0.91	LXC87/15/250-28
	20	100	71			0.74	0.71	LXC87/20/250-28
	29	100	48					LXC87/29/250-28

LXC 110 40 mm

KW		Flange	RPM	2.2KW	3KW	4KW	Code
Gearbox	Ratio			sf	sf	sf	
	20	100	70	2.5	1.9	1.4	LXC110/20/250-28
	30	100	47	1.8	1.3	0.99	LXC110/30/250-28
	40	100	35	1.5	1.1	0.83	LXC110/40/250-28



“LXC”
DIMENSIONS (mm)

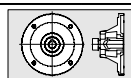


LXC 87-110

LXC 130

Tipo Typ Type Type	Peso Gew. Weight Poids [Kg]	d ₁	g ₅	k	q ₁
87	14	160			
	14	200			
	14	250			
	19	160			
	19	200			
	19	250	248	130	
	24	160			
	24	200			
	24	250			
	28	160			
28	200				
28	250				
110	19	200			
	19	250			
	19	300			
	24	200			
	24	250			
	24	300	300	158	
	28	200			
	28	250			
	28	300			
	38	200			
130	24	200	365	191	
	24	250	365	191	
	24	300	365	191	
	28	200	365	191	
	28	250	365	191	
	28	300	365	191	
	38	200	365	191	
	38	250	365	191	
	38	300	365	191	
	42	350	377	203	
48	350	377	203		

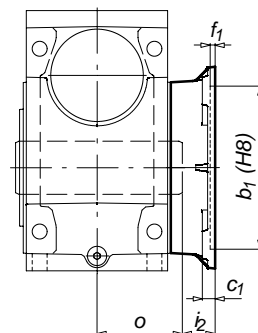
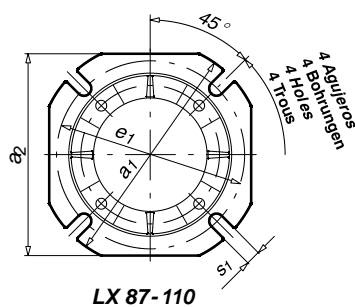
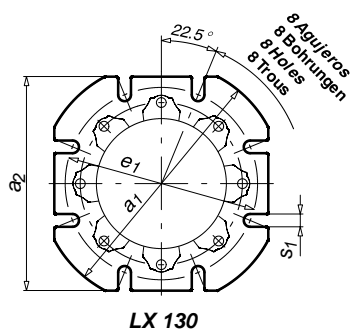
Tipo Typ Type Type	a	a ₁	a ₂	a ₃	b	b ₀	b ₁	c	e	e ₁	f	f ₀	f ₁	h	h ₁	n	n ₀	o	p ₃	q	s	s ₂ x l ₅	z ₇	d	t	u
87	108	160	19	60	164	172	110	19	135	130	221	121	3.5	97	87	46	46	75	245	118	14	M10x20	139	35	38.3	10
110	132	200	21.5	75	195	220	130	23.5	165	165	266	154	3.5	120	110	60	58	90	310	142	16	M12x24	169	40	43.3	12
130	150	250	22	90	245	265	180	27	190	215	330	199	4	145	130	70	70	104	375	174	16	M12x24	196	45	48.8	14



() Under requirement
Approximate weights are shown in the tables.
We reserve the rights to modify any dimensions, without changing the Type number of reducers.
CD for CAD systems are also available, providing to scale, drawings of reducers and accessoires.

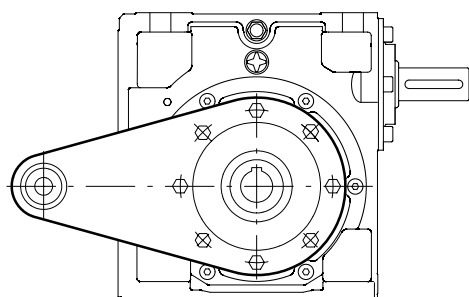


**OUTPUT FLANGE
SUPPLEMENTS
SERIE "LX"
DIMENSIONS (mm)**

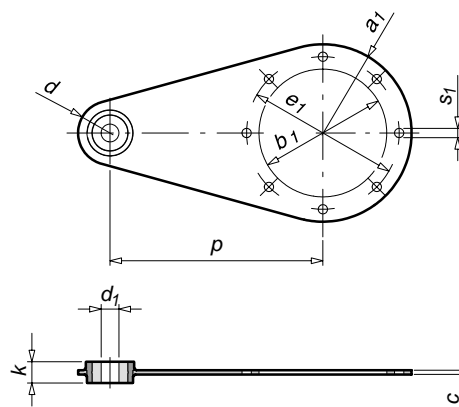


Tipo Typ Type	Código Referenz Ref. Réf.	a_1	a_2	b_1	c_1	e_1	f_1	b_2	o	s_1
87	3049050240	210	190	152	12	176	6	36	75	13
110	3049060240	280	236	170	15	230	6	41	90	13
130	3049070240	320	284	180	18	255	10	39	104	16

**TORQUE ARM
SUPPLEMENTS
SERIE "LX"
DIMENSIONS (mm)**



LX 87-110-130



Tipo Typ Type	Código Referenz Ref. Réf.	a_1	b_1	c	d	d_1	e_1	k	p	s_1
L 40	3049020100	62	90	4	25	12	110	18	100	9
L 49	3049030110	72.5	111	4	25	12	130	18	120	9
L 61	3049040120	85	126	5	25	12	150	18	150	11
LX 87	3049050131	80	111	5	32	16	130	25	200	11
LX 110	3049060141	100	131	6	32	16	165	25	250	13
LX 130	3049070151	125	181	6	45	25	215	30	300	13

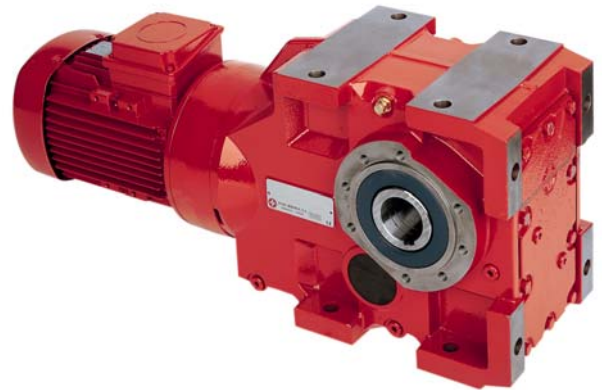


PUJOL MUNTALA

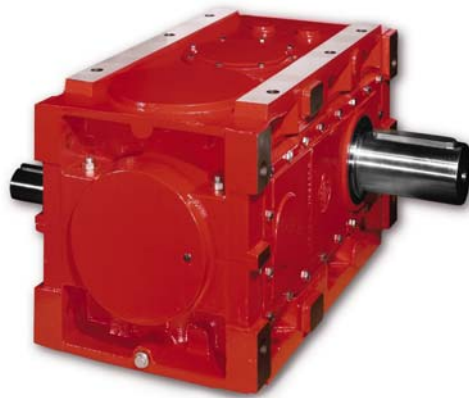
INDENT PRODUCTS



Series DX



Series KX



Series T



Royce Cross Agencies



3 CORD STREET, DUDLEY PARK, 5008

Ph: 08 8269 4000 Fax: 08 8269 6699 Email: sales@roycecross.com.au

ELECTRIC MOTORS

SINGLE PHASE MOTORS 240V 0.09KW – 7.5KW

THREE PHASE MOTORS 415V 0.09KW – 315KW

BRAKE MOTORS, HAZARDOUS LOCATION MOTORS, STAINLESS STEEL MOTORS
2 SPEED MOTORS, AIRCONDITIONING, SPECIAL APPLICATION MOTORS

GEARED MOTORS

AUSTRALIAN AGENTS—PUJOL GEARED REDUCERS & GEARED MOTORS

ALL OTHER BRANDS INCLUDING BONFIGLIOLI, SEW, MOTOVARIO, ROSSI, STM
GEARBOX REPAIRS

BRAKE MOTORS

MOTORISED DRUMS

DC MOTORS & CONTROL

DC VARIABLE SPEED, DC GEARBOXES, CONTROLLERS, BRUSHES, SPARES
BALDOR AGENTS, LEROY SOMER AGENTS
ARMATURE REWINDS & REPAIRS

VARIABLE SPEED DRIVES

240V IN OR 415V IN VARIABLE SPEED DRIVES FOR SPEED VARIATION ON THREE PHASE
AC MOTORS, EXPERT ADVICE AND COMMISIONING, PROBLEM SOLVING

TOSHIBA PLC PRODUCTS

S2 & V SERIES, T1, T2 & T3 SERIES, OIS, GATEWAY PRODUCTS, APPOINTED SA AGENTS

SOFT STARTERS, ENCLOSURES, STARTERS, PENDANTS

DOL, STAR/DELTA STARTERS, SHEILDDED CABLES, REVERSING STARTERS, SPECIALS

PULLEYS, SPROCKETS & COUPLINGS

REWINDS & REPAIRS